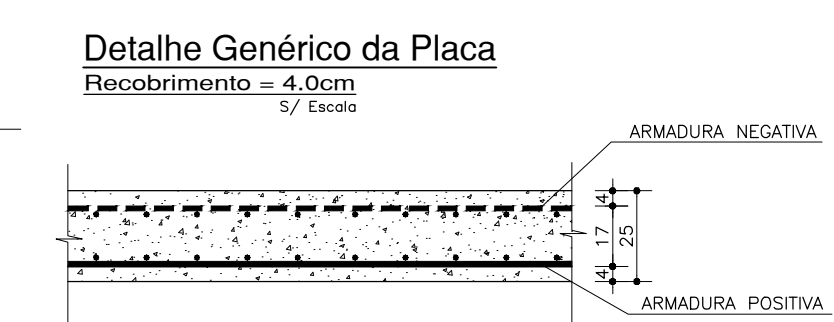
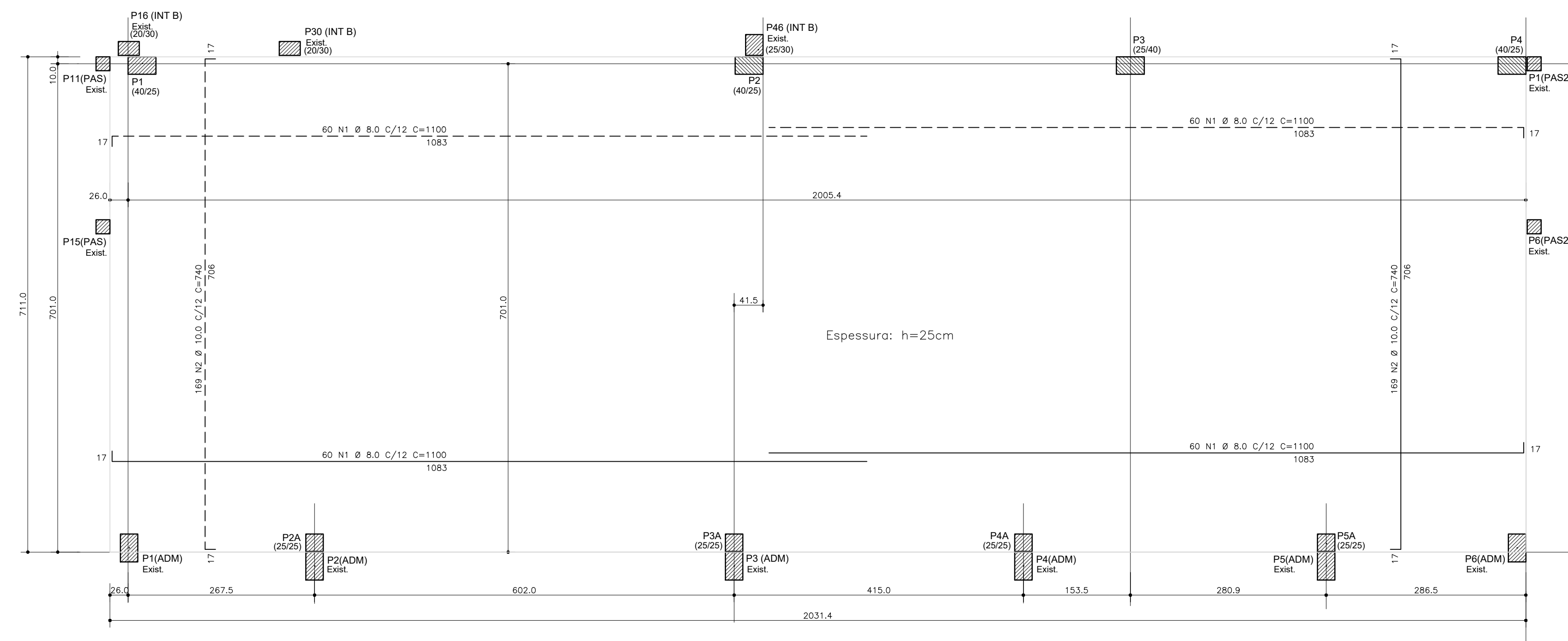


PLACA DE FUNDAÇÃO



OBSERVAÇÕES:
Todas as medidas devem ser conferidas no local. Confira medidas dos equipamentos.

DOCUMENTO DE REFERÊNCIA:

REGISTRO DE ALTERAÇÕES DE PROJETO:

DATA	DESCRIÇÃO	ALTERADO POR

Quadro de Ferros

N	Ø (mm)	Q	Comp. Unit. (cm)
1	8.0	240	1100
2	10.0	338	1183
3	12.5	40	462
4	12.5	24	383
5	12.5	24	210
6	5.0	244	125
7	5.0	244	32
8	12.5	16	328
9	5.0	188	95

Resumo

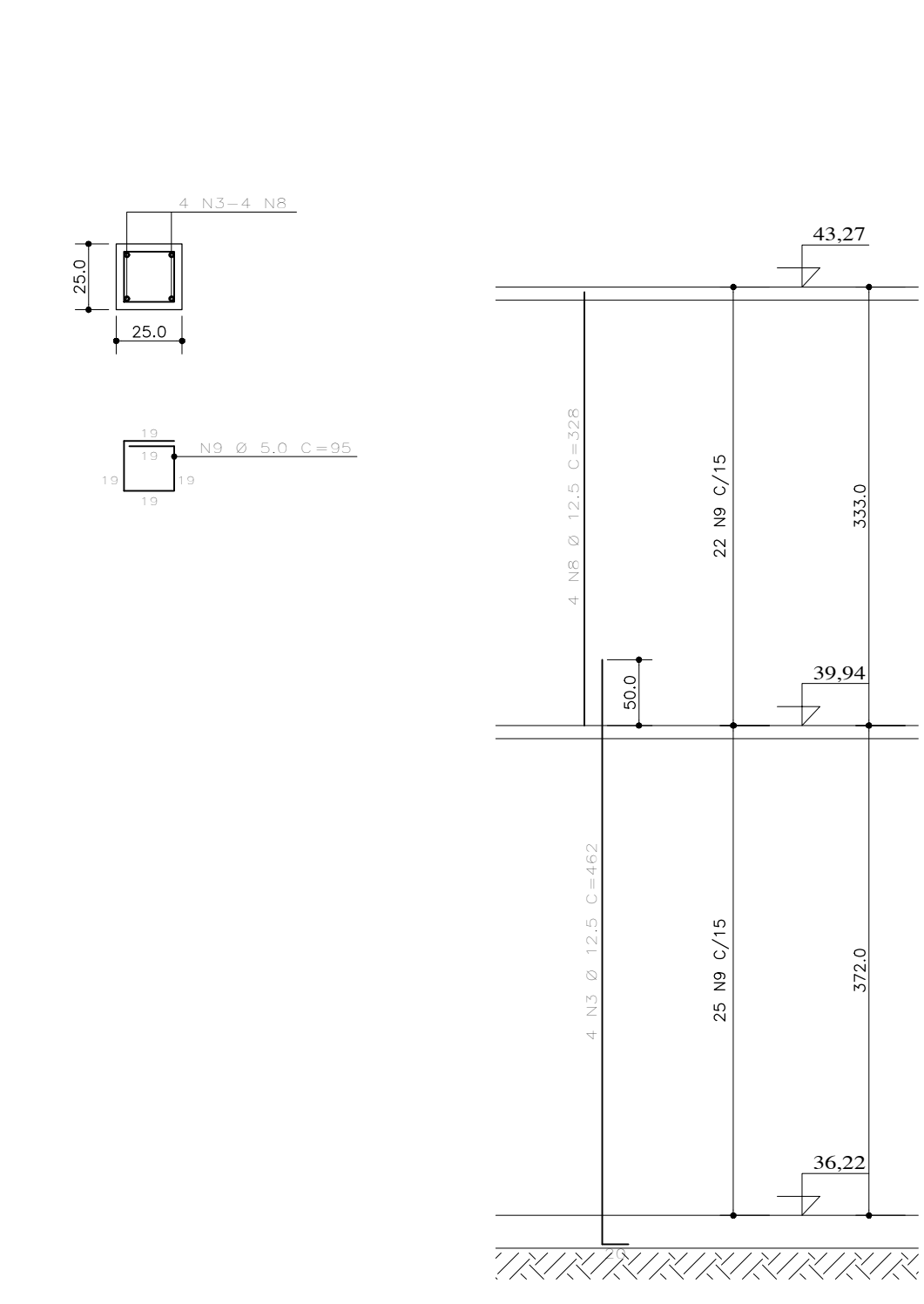
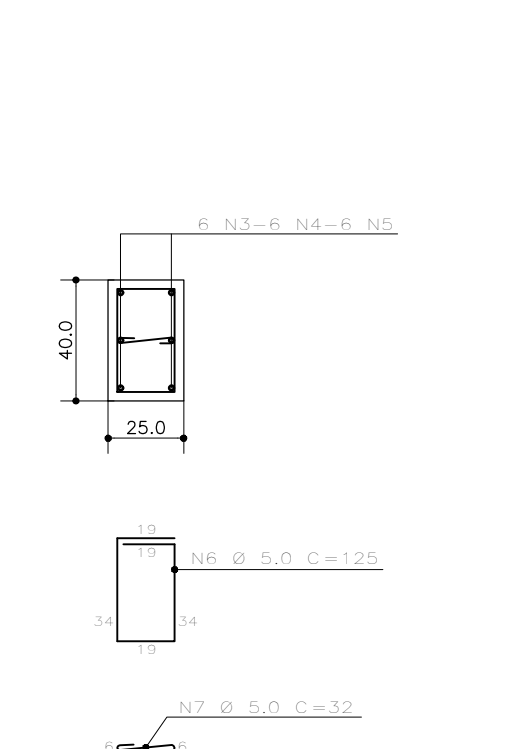
Aço	Ø (mm)	Comp. Total (m)	Peso (kg)
CA-80	5.0	562	90
CA-50	8.0	2640	1043
CA-50	10.0	3999	2467
CA-50	12.5	380	366
Total			3966

Concreto: C >= 25MPa.

DETALHES DOS PILARES

P1 = P2 = P3 = P4 (25/40)

P2A = P3A = P4A = P5A (25/25)



ATENÇÃO:
Este projeto é protegido por direitos autorais. Qualquer reprodução total ou parcial sem a devida autorização por parte da arquiteta implicará na utilização dos mecanismos legais.

CONCRETO : C >=25MPa Fator α/c <=0,55 Ecs=23,800 MPa

2 2 2 7 1 9

FRANCISCO PEIXOTO
ENGENHEIROS ASSOCIADOS S/C

JUAREZ PIRES Mo. BETANIA MELLO MONICA SAMPAIO EDMILSON ALVES
Crea: 3.0150 Crea: 19.1930 Crea: 21.2290 Crea: 90.4320

PMG
projetos e engenharia

HOSPITAL GERAL DE LUIS EDUARDO MAGALHÃES

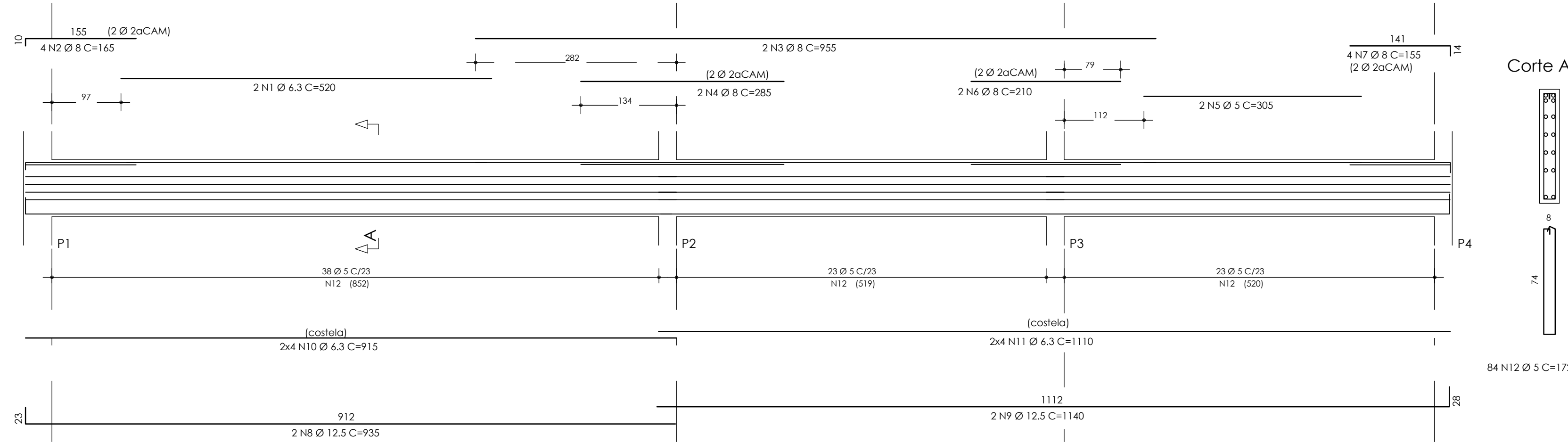
PREFEITURA MUNICIPAL DE LUIS EDUARDO MAGALHÃES

PÁTIO - Placa de fundação e detalhes dos pilares

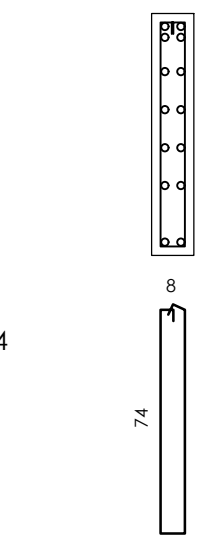
PAT01

1:50 FRANCISCO PEIXOTO CREA: 4.888-0-BA FPEA 02/2019

V1 (14/80)

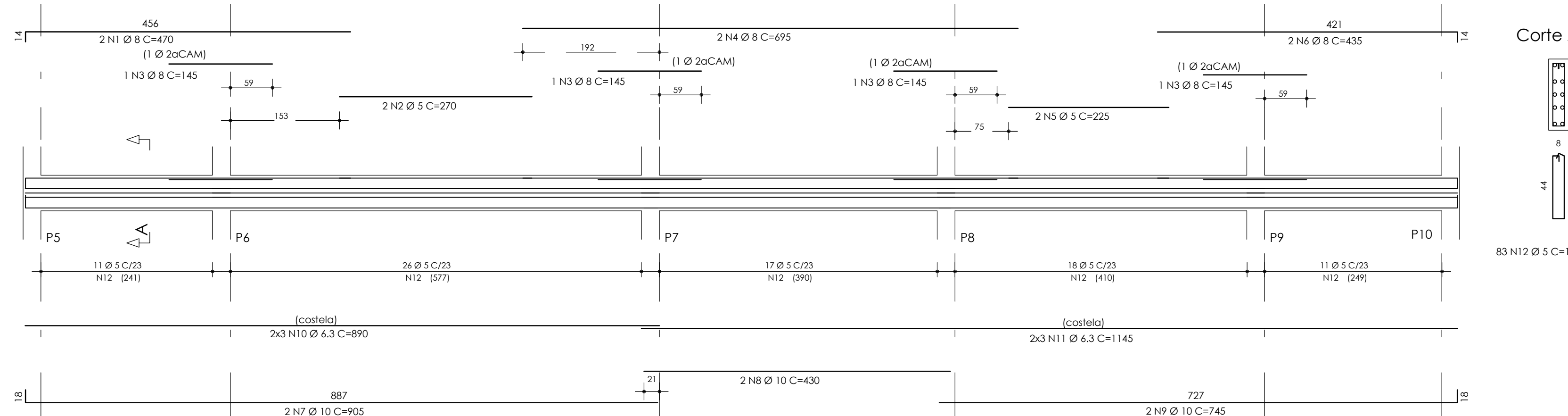


Corte A

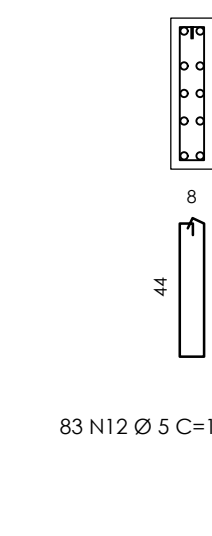


84 N12 Ø 5 C=172

V2 (14/50)

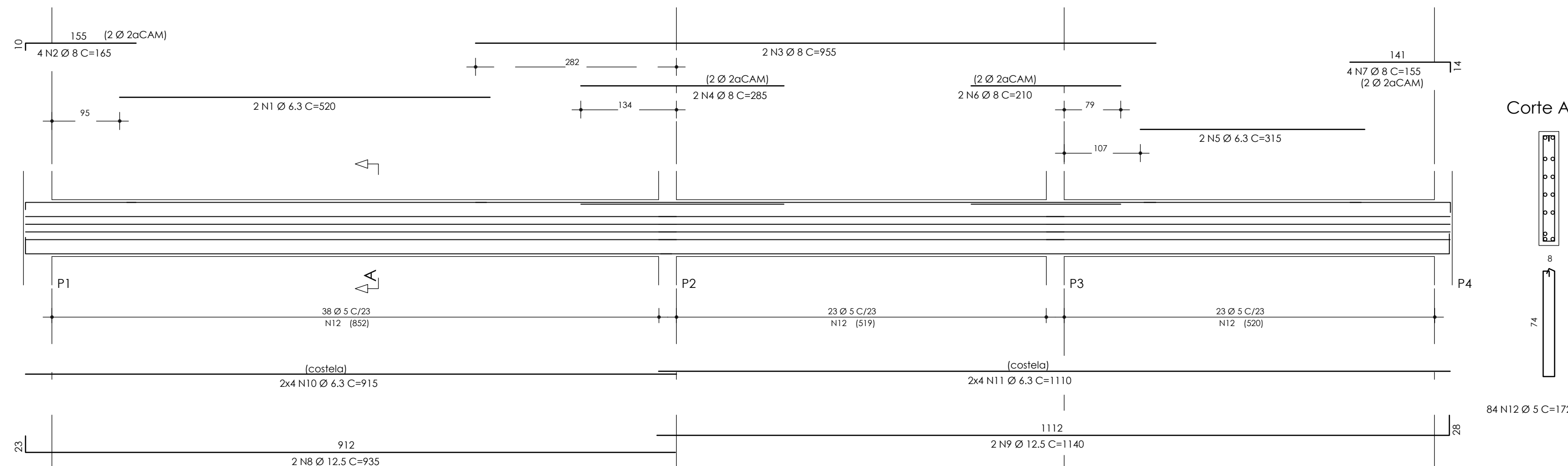


Corte A

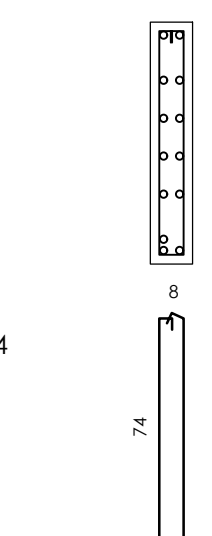


83 N12 Ø 5 C=112

V101 (14/80)

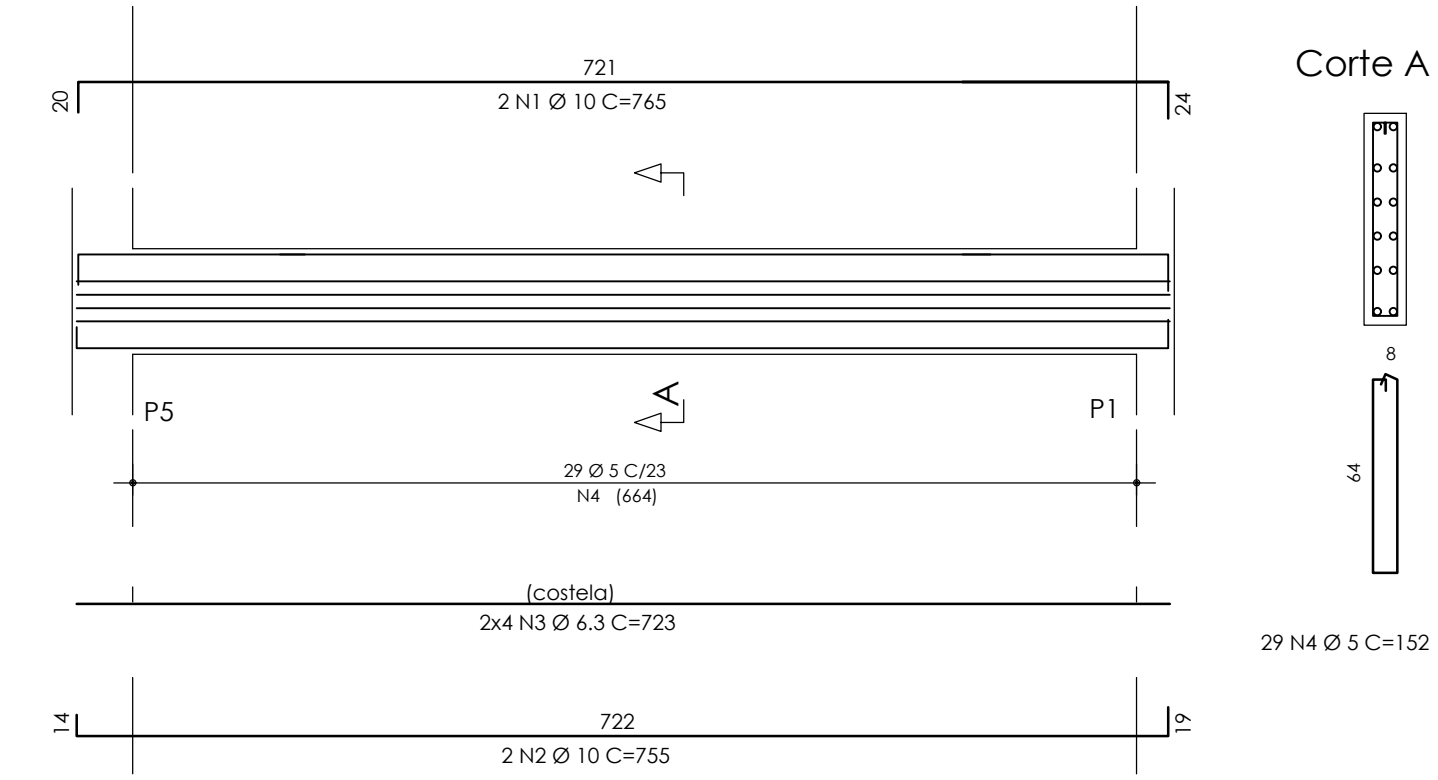


Corte A

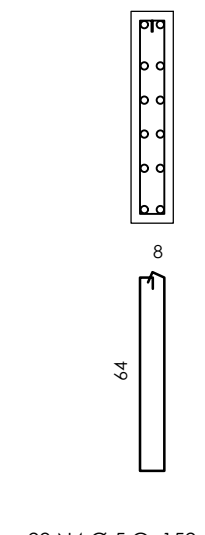


84 N12 Ø 5 C=172

V3 (14/70)

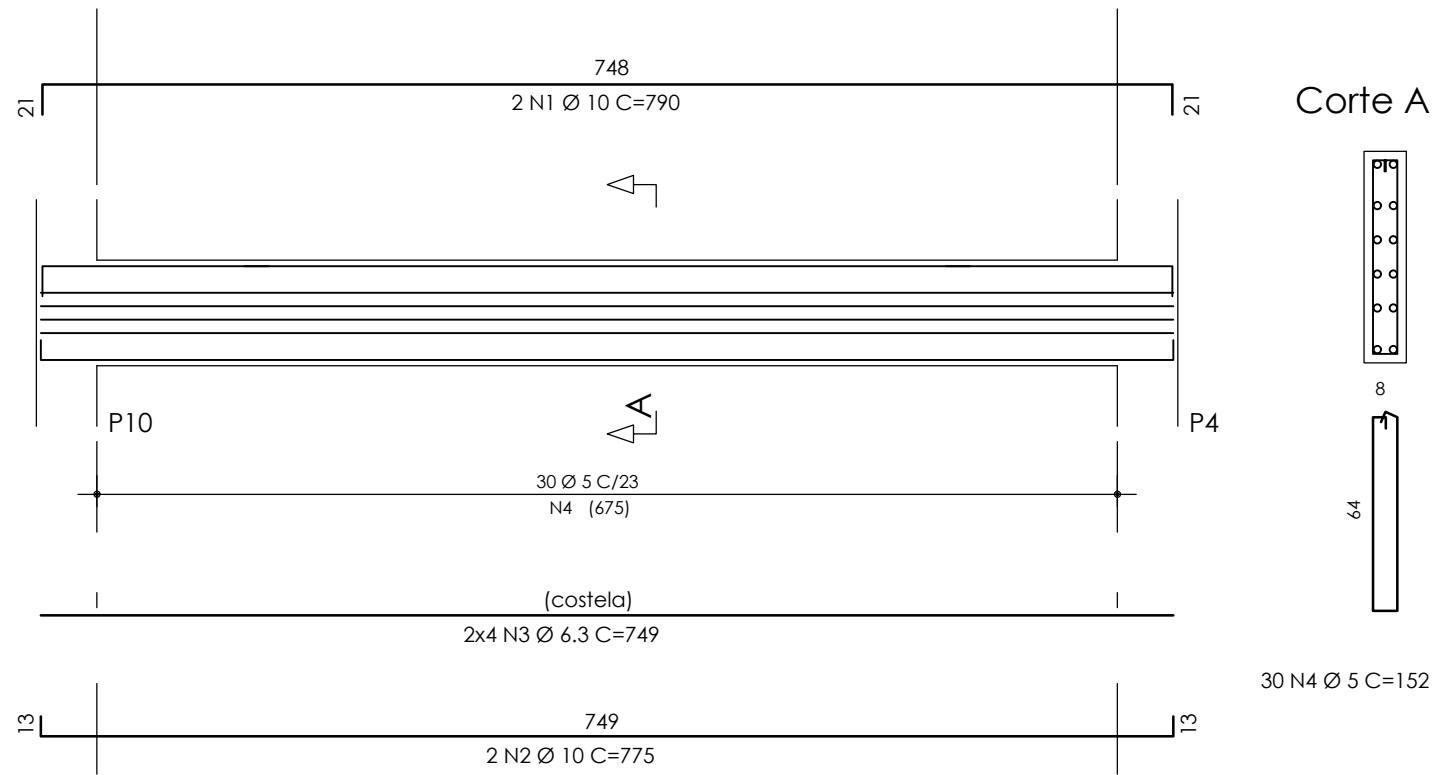


Corte A

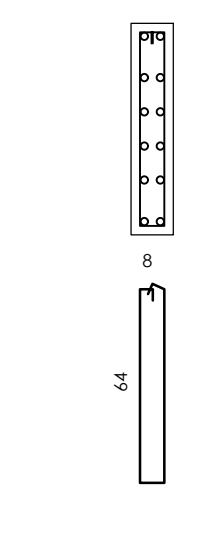


29 N4 Ø 5 C=152

V4 (14/70)

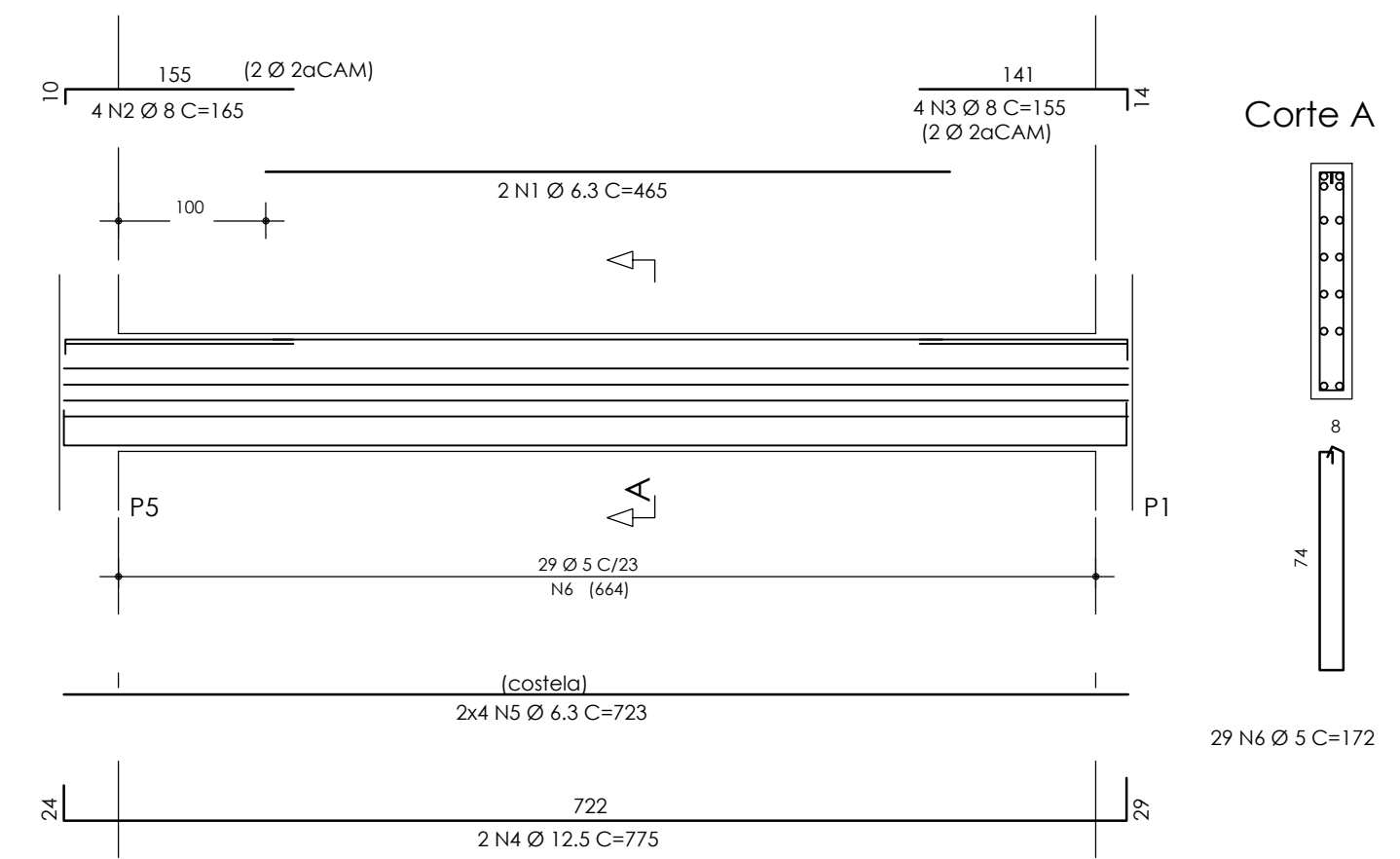


Corte A

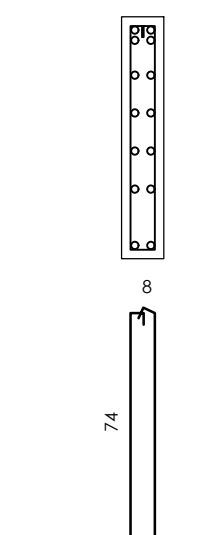


30 N4 Ø 5 C=152

V103 (14/80)



Corte A



29 N6 Ø 5 C=172

ACO	POS	BIT (mm)	QUANT	COMPRIMENTO (cm)	UNID	TOTAL (cm)
V1						
50A	1	6.3	2	520	1040	
50A	2	8	4	145	580	
50A	3	8	2	955	1910	
50A	4	8	2	285	570	
60B	5	5	2	305	610	
50A	6	8	2	210	420	
50A	7	8	4	155	620	
50A	8	12.5	2	935	1870	
50A	9	12.5	2	1140	2280	
50A	10	6.3	8	915	7320	
50A	11	6.3	8	1110	8880	
60B	12	5	84	172	14448	
V2						
50A	1	8	2	470	940	
60B	2	5	2	270	540	
50A	3	8	4	145	580	
50A	4	8	2	695	1390	
60B	5	5	2	225	450	
50A	6	8	2	435	870	
50A	7	10	2	905	1810	
50A	8	10	2	430	860	
50A	9	10	2	745	1490	
50A	10	6.3	6	690	5340	
50A	11	6.3	6	1145	6870	
60B	12	5	83	112	9296	
V3						
50A	1	10	2	765	1530	
50A	2	10	2	755	1510	
50A	3	6.3	8	723	5784	
60B	4	5	29	152	4408	
V4						
50A	1	10	2	790	1580	
50A	2	10	2	775	1550	
50A	3	6.3	8	749	5992	
60B	4	5	30	152	4560	
V101						
50A	1	6.3	2	520	1040	
50A	2	8	4	145	580	
50A	3	8	2	955	1910	
50A	4	8	2	285	570	
50A	5	6.3	2	315	630	
50A	6	8	2	210	420	
50A	7	8	4	155	620	
50A	8	12.5	2	935	1870	
50A	9	12.5	2	1140	2280	
50A	10	6.3	8	915	7320	
50A	11	6.3	8	1110	8880	
60B	12	5	84	172	14448	
V103						
50A	1	6.3	2	465	930	
50A	2	8	4	145	580	
50A	3	8	4	155	620	
50A	4	12.5	2	775	1550	
50A	5	6.3	8	723	5784	
60B	6	5	29	172	4988	

RESUMO AÇO CA 50-60			
ACO	BIT (mm)	COMPR (m)	PESO (kg)
60B	5	537	86
50A	6.3	688	165
50A	8	134	54
50A	10	103	65
50A	12.5	99	99
Peso Total 60B =			86 kg
Peso Total 50A =			382 kg

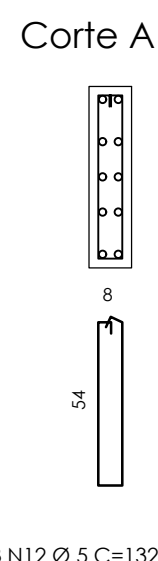
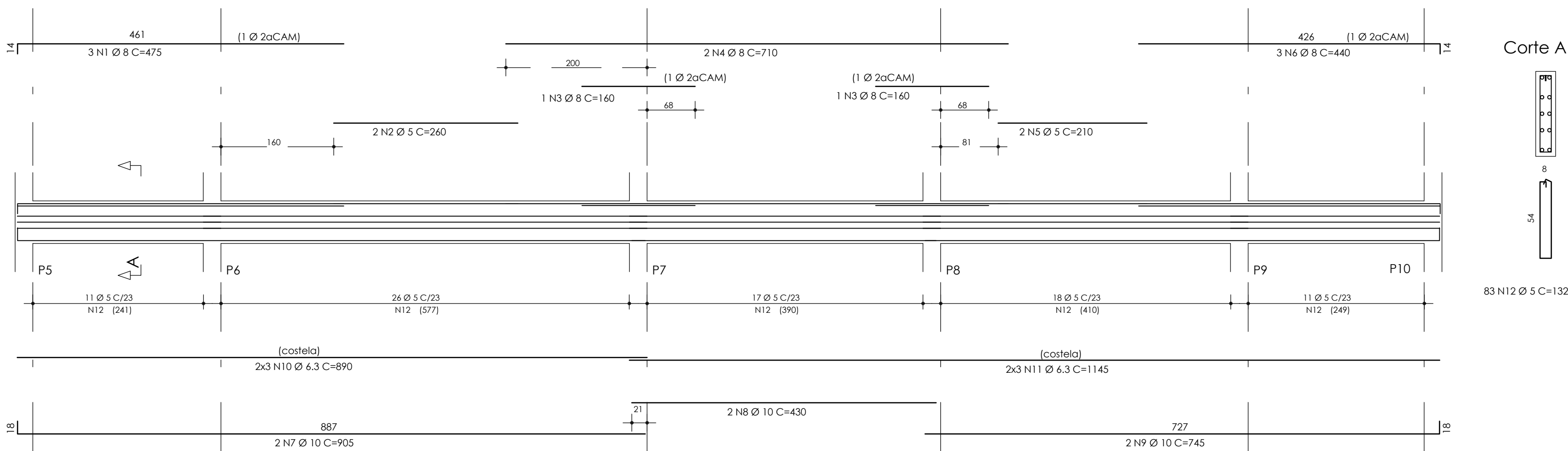
CONCRETO : C >=25MPa Fator a/c <=0,55 Ecs=23.800 MPa
 2 6 2 7 1 9

PROJETO ESTRUTURAL
FRANCISCO PEIXOTO
 ENGENHEIROS ASSOCIADOS S/C
 CREA: 4.688-D-3a REGIÃO
 JUAREZ PIRES Ma. BETANIA MELLO MONICA SAMPAIO EDMILSON ALVES
 Crea: 3.015D Crea: 19.193D Crea: 21.229D Crea: 90.432D

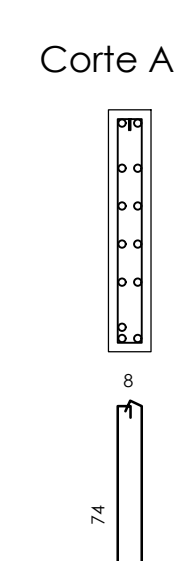
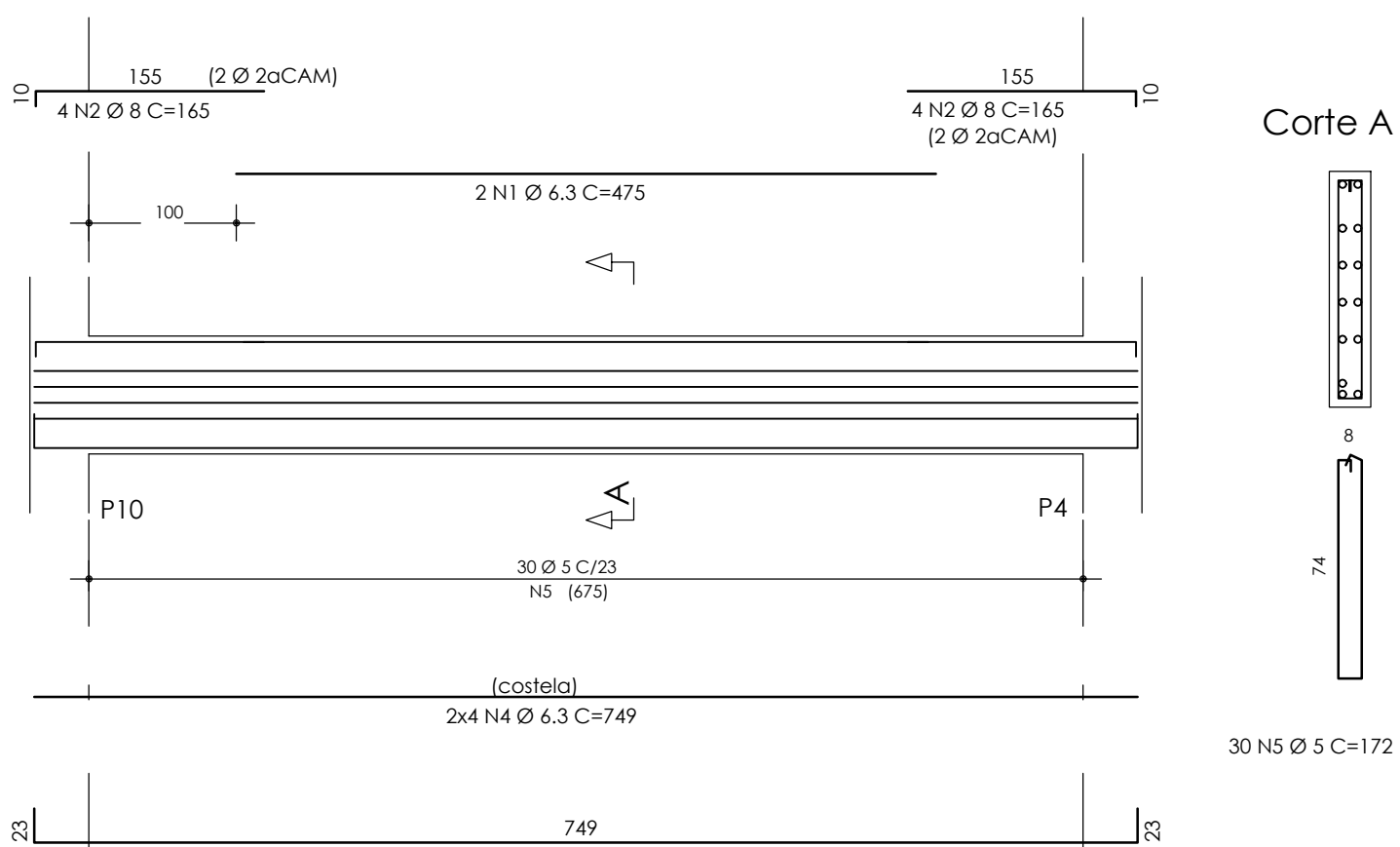


HOSPITAL GERAL DE LUIS EDUARDO MAGALHÃES	LOCAL: AVENIDA BRASILEIRA, LOTEAMENTO MARCO DO OESTE 1, LUIS EDUARDO MAGALHÃES - BAHIA
PREFEITURA MUNICIPAL DE LUIS EDUARDO MAGALHÃES	PROJETO
PROJETO ESTRUTURAL	UNIDADE DE SAÚDE
PÁTIO - Vigas do 1º. e 2º.tetos	PROJETO EXECUTIVO
PMG - PROJETOS E ENGENHARIA	PAT03
ESCALA: 1:50	PROJETO: FRANCISCO PEIXOTO CREA: 4.688-D-BA
REVISÃO: 02/12/19	FEPA

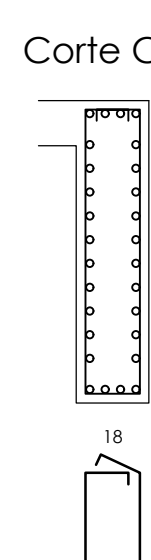
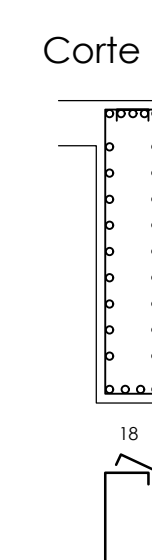
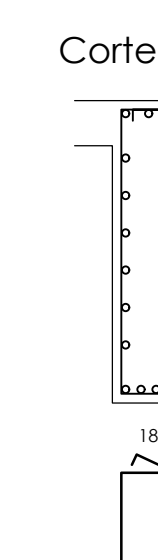
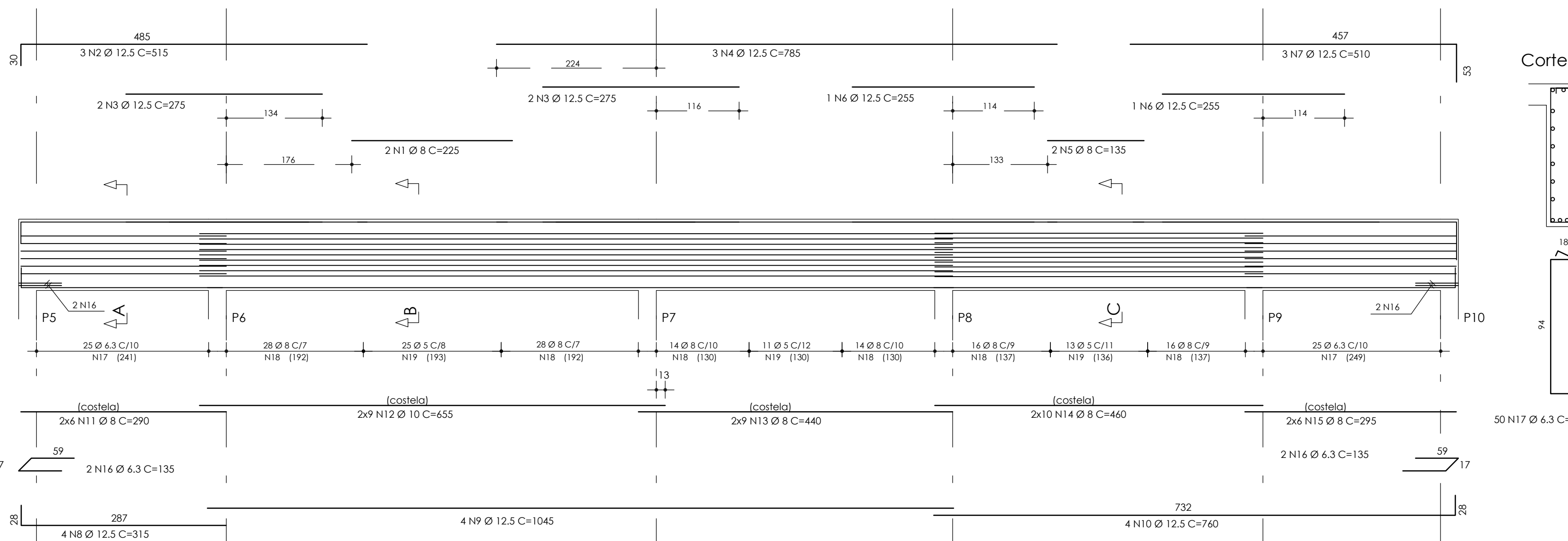
V102 (14/60)



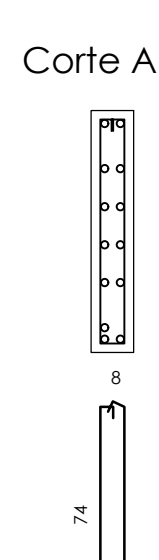
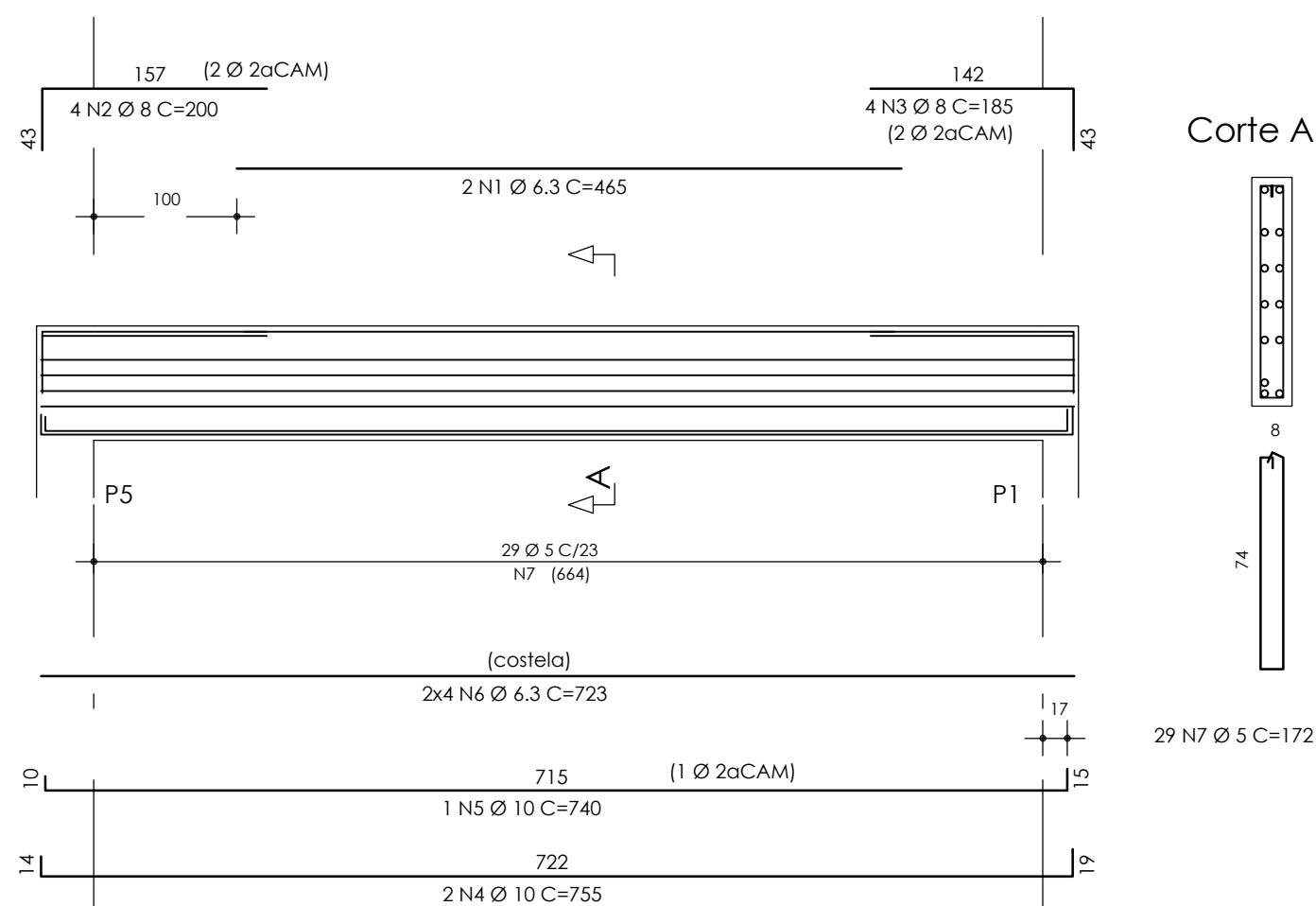
V104 (14/80)



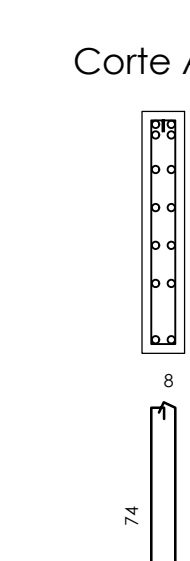
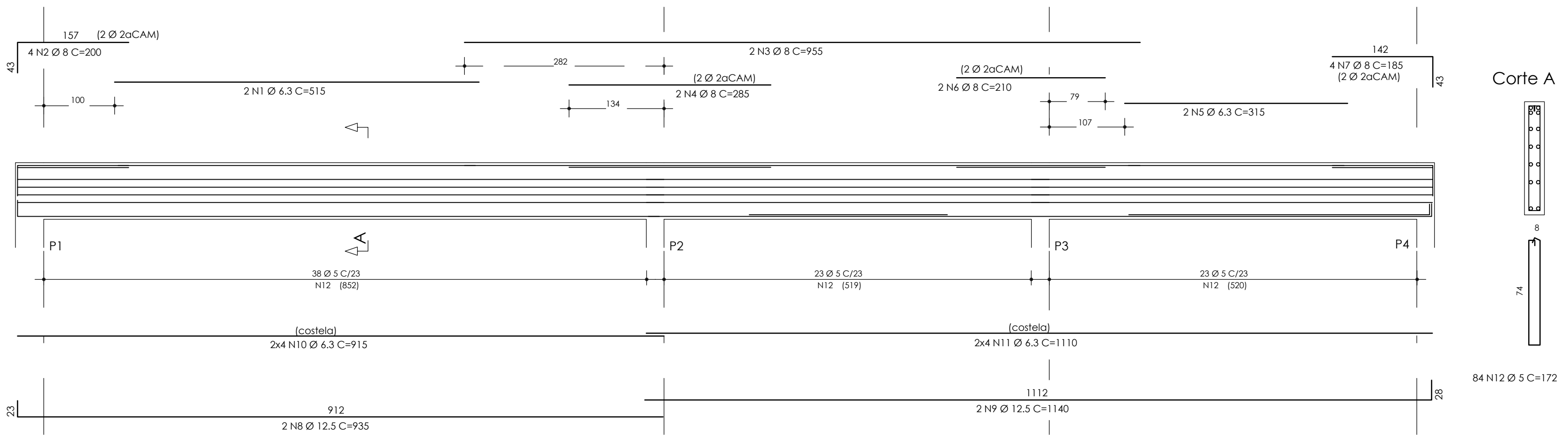
V202 (24/100)



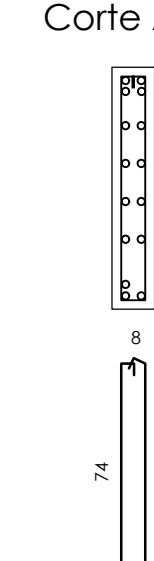
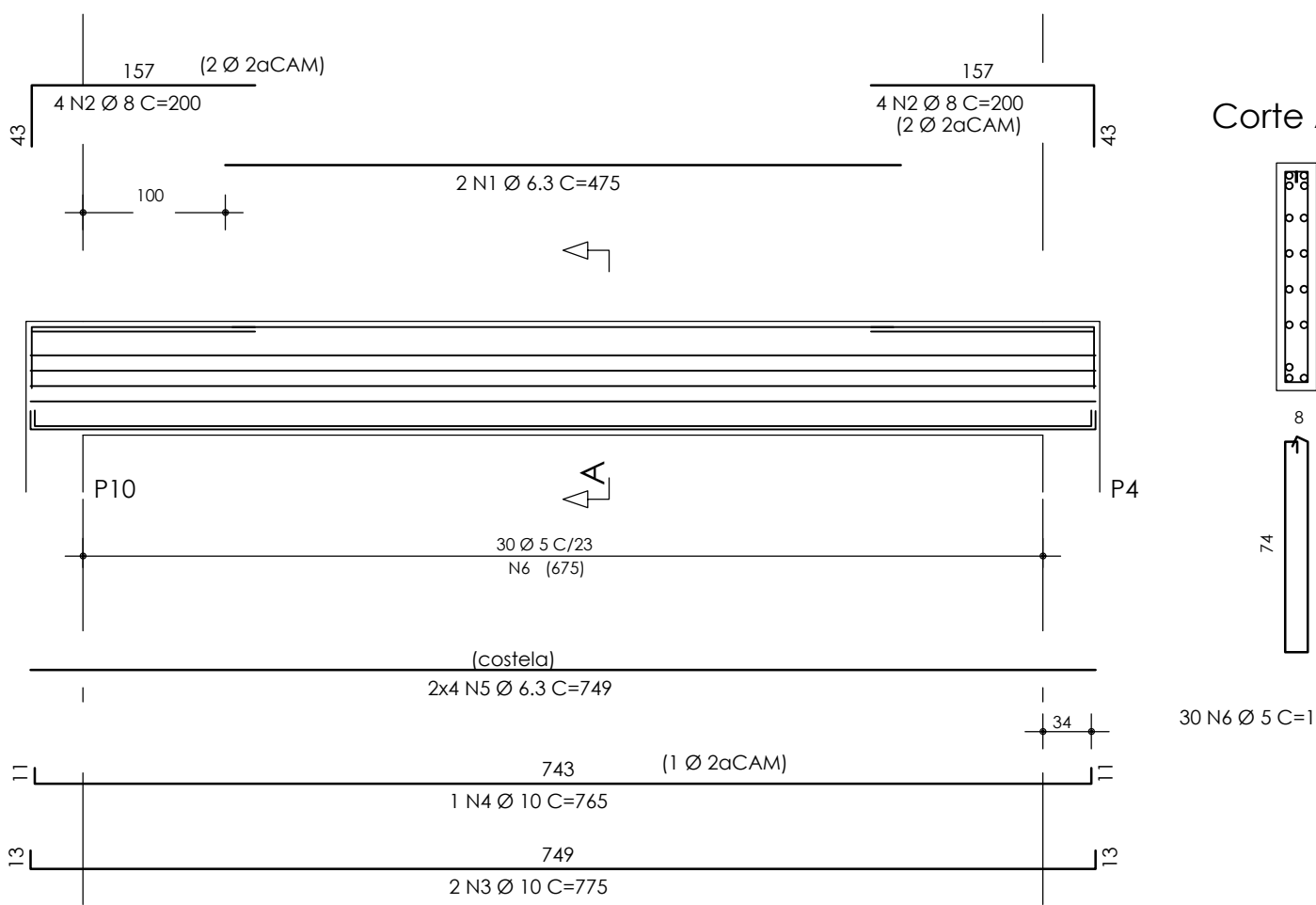
V203 (14/80)



V201 (14/80)



V204 (14/80)



ACO	POS	BIT (mm)	QUANT	UNIF (cm)	COMPRIMENTO (cm)	TOTAL (cm)
V102						
50A	1	8	3	475	1425	
60B	2	5	2	260	520	
50A	3	8	2	160	320	
50A	4	8	2	710	1420	
60B	5	5	2	210	420	
50A	6	8	3	440	1320	
50A	7	10	2	905	1810	
50A	8	10	2	430	860	
50A	9	10	2	745	1490	
50A	10	6.3	6	890	5340	
50A	11	6.3	6	1145	6870	
60B	12	5	83	132	10956	
V104						
50A	1	6.3	2	475	950	
50A	2	8	8	165	1320	
50A	3	12.5	2	795	1590	
50A	4	6.3	8	749	5992	
60B	5	5	30	172	5160	
V201						
50A	1	6.3	2	515	1030	
50A	2	8	4	200	800	
50A	3	8	2	955	1910	
50A	4	8	2	285	570	
50A	5	6.3	2	315	630	
50A	6	8	2	210	420	
50A	7	8	4	185	740	
50A	8	12.5	2	935	1870	
50A	9	12.5	2	1140	2280	
50A	10	6.3	8	915	7320	
50A	11	6.3	8	1110	8880	
60B	12	5	84	172	14448	
V202						
50A	1	8	2	225	450	
50A	2	12.5	3	515	1545	
50A	3	12.5	4	275	1100	
50A	4	12.5	3	785	2355	
50A	5	8	2	135	270	
50A	6	12.5	2	255	510	
50A	7	12.5	3	510	1530	
50A	8	12.5	4	315	1260	
50A	9	12.5	4	1045	4180	
50A	10	12.5	4	760	3040	
50A	11	8	12	290	3480	
50A	12	10	18	655	11790	
50A	13	8	18	440	7920	
50A	14	8	20	440	9200	
50A	15	8	12	295	3540	
50A	16	6.3	4	135	540	
50A	17	6.3	50	242	12100	
50A	18	8	114	242	28072	
60B	19	5	49	242	11858	
V203						
50A	1	6.3	2	465	930	
50A	2	8	4	200	800	
50A	3	8	4	185	740	
50A	4	10	2	755	1510	
50A	5	10	1	740	740	
50A	6	6.3	8	723	5784	
60B	7	5	29	172	4988	
V204						
50A	1	6.3	2	475	950	
50A	2	8	8	200	1600	
50A	3	10	2	775	1550	
50A	4	10	1	765	765	
50A	5	6.3	8	749	5992	
60B	6	5	30	172	5160	

RESUMO AÇO CA 50-60			
ACO	BIT (mm)	COMPR (m)	PESO (kg)
60B	5	535	86
50A	6.3	633	158
50A	8	163	265
50A	10	205	129
50A	12.5	213	213
Peso Total 60B =			86 kg
Peso Total 50A =			765 kg

CONCRETO : C >=25MPa Fator a/c <=0,55 Ecs=23,800 MPa

26 27 19

END. AVENIDA JURACY MAGALHÃES Jr. Nº 300
W.A. EMPRESARIAL SALAS 404/405 - RIO VERMELHO
CEP: 41940-060 - SALVADOR-BAHIA
(71) 3176-0101 / 99168-2955 e-mail: fpeixoto@peixoto.com.br

FRANCISCO PEIXOTO
ENGENHEIROS ASSOCIADOS S/C
CREA: 4.688-D 3ª REGIAO

JUAREZ PIRES Ma. BETANIA MELLO MONICA SAMPAIO EDMILSON ALVES
Crea: 3.015D Crea: 19.193D Crea: 21.229D Crea: 90.432D

PMG
projetos e engenharia

HOSPITAL GERAL DE LUIS EDUARDO MAGALHÃES LOCAL: AVENIDA BRASÍLIA, LOTEAMENTO IMISSO DO CESTE 1, LUIS EDUARDO MAGALHÃES - BHIA

PROJETO: PREFEITURA MUNICIPAL DE LUIS EDUARDO MAGALHÃES

TIPO DE PROJETO: PROJETO EXECUTIVO

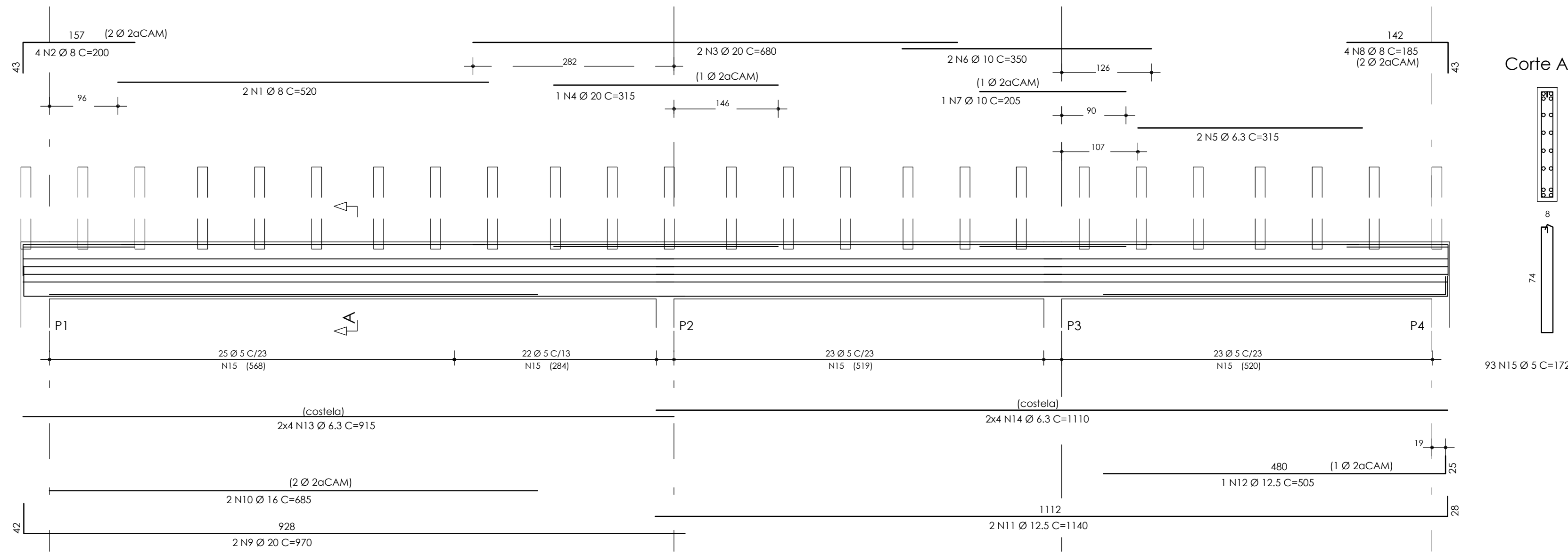
UNIDADE DE SAÚDE: PATIO - Vigas do 1º e 2º tetos

PAT04

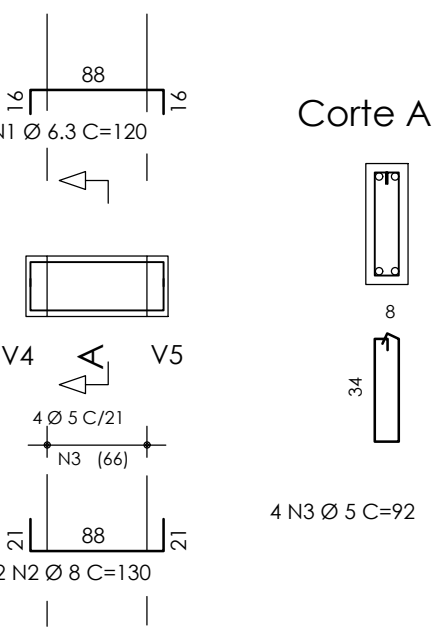
PMG - PROJETOS E ENGENHARIA

ESCALA: 1:50 PROJETO EXECUTIVO DATA: 02/12/19

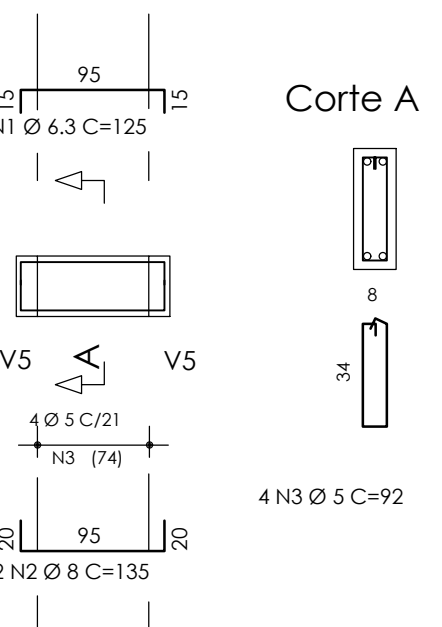
VA (14/80)



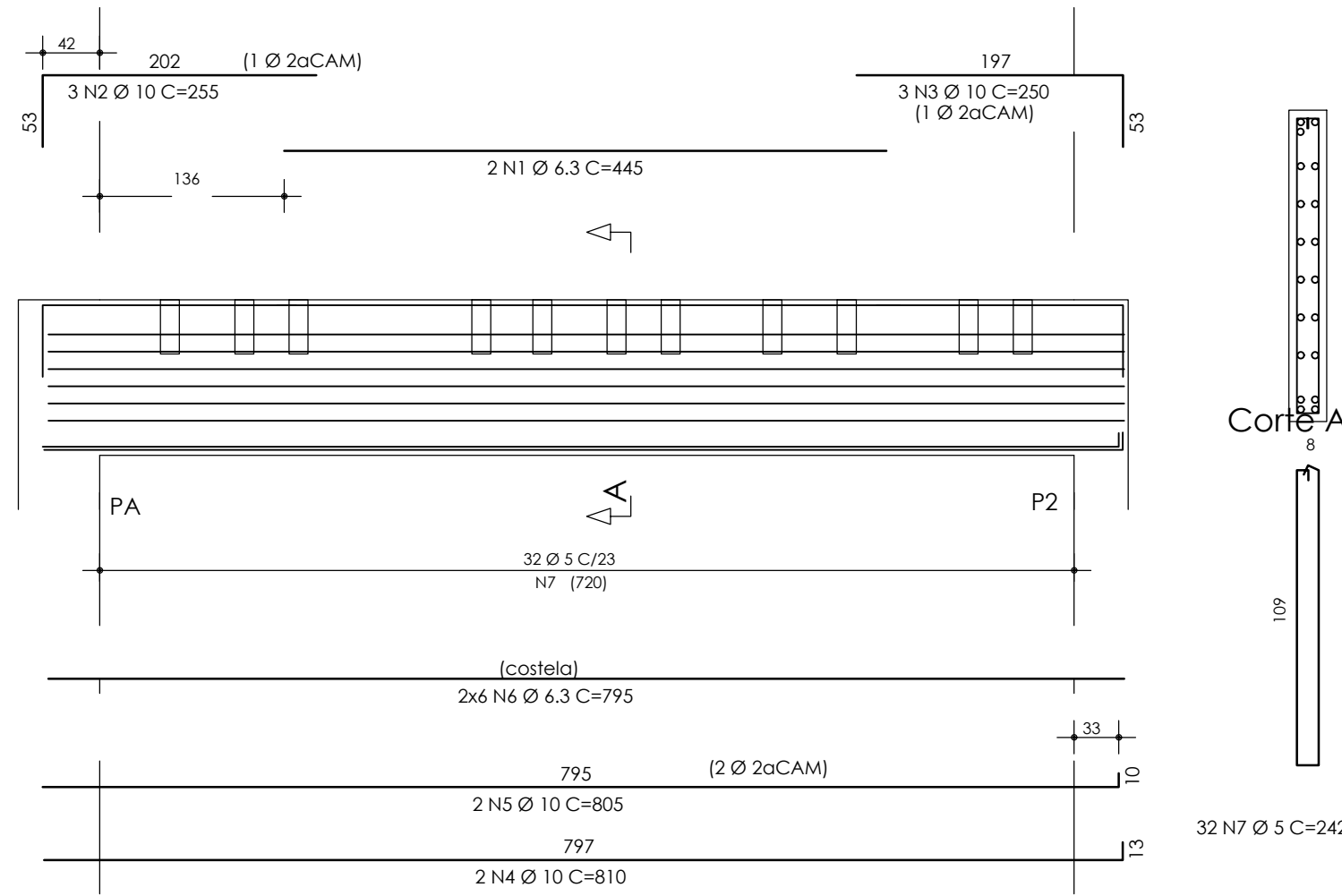
VB (14/40) (X80)



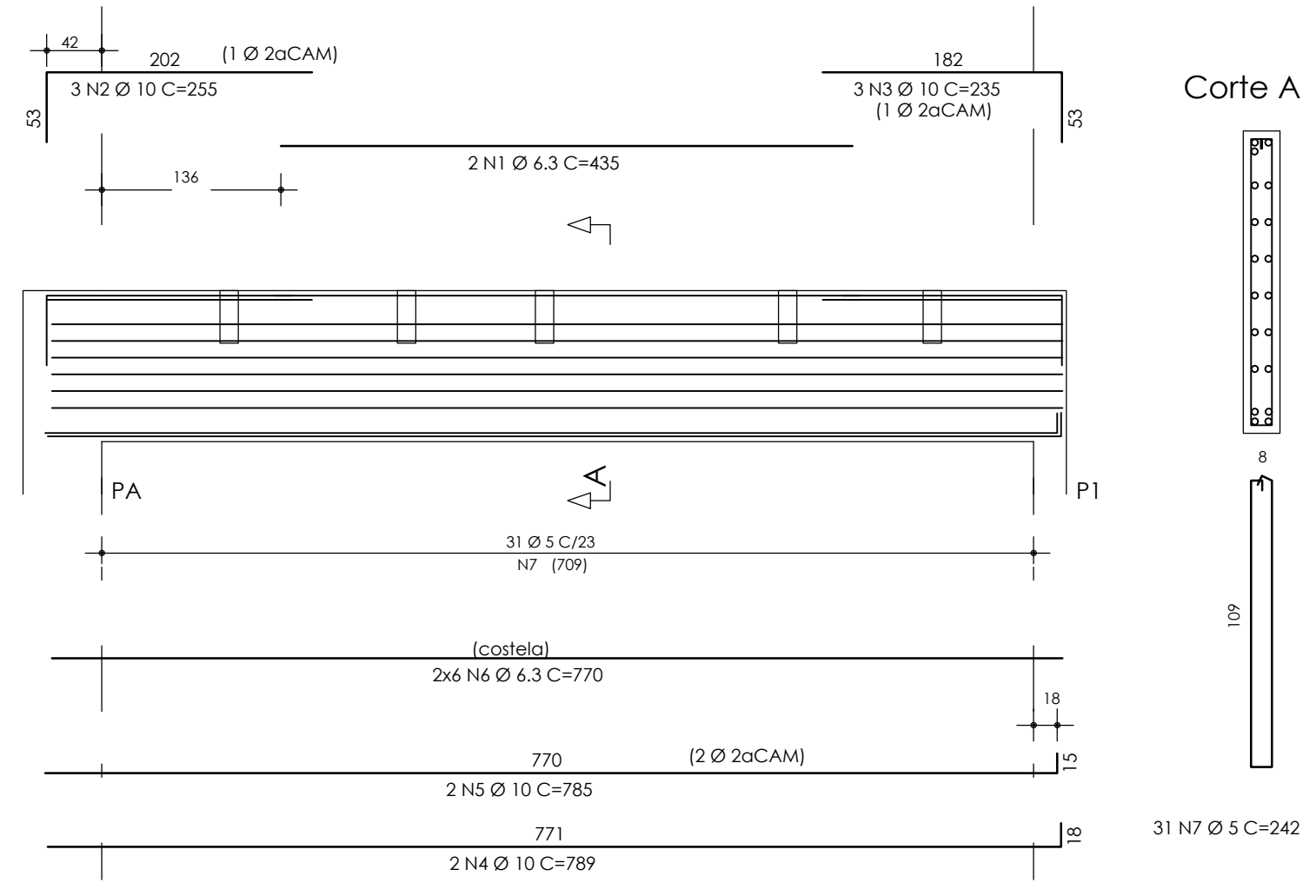
VC (14/40) (X48)



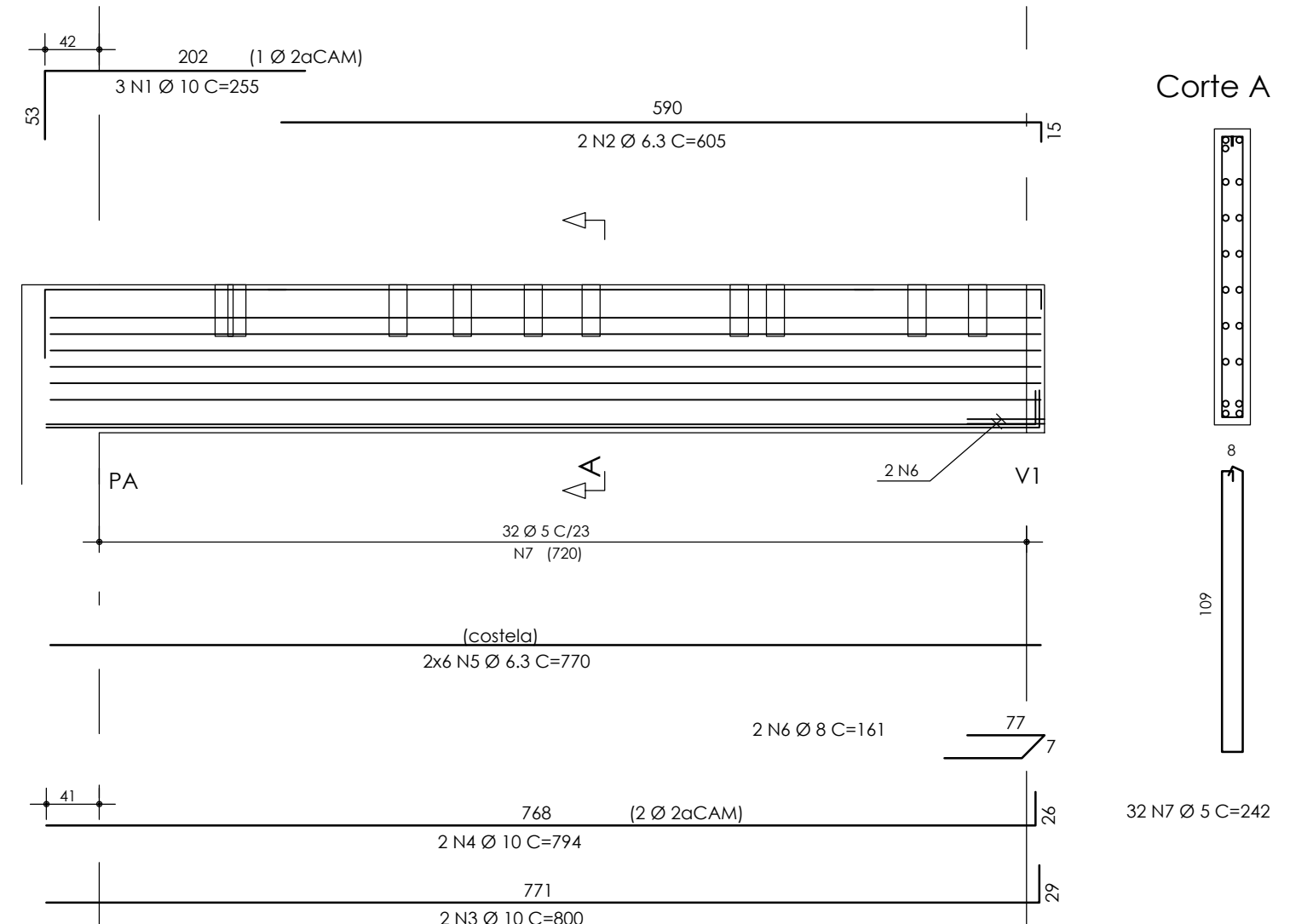
VF (14/115) (X2)



VD (14/115)



VE (14/115) (X22)



AÇO	POS	BIT (mm)	QUANT	COMPRIMENTO	
				UNIT (cm)	TOTAL (cm)
VA					
S0A	1	8	2	520	1040
S0A	2	8	4	200	800
S0A	3	20	2	680	1360
S0A	4	20	1	315	315
S0A	5	6.3	2	315	630
S0A	6	10	2	350	700
S0A	7	10	1	205	205
S0A	8	8	4	185	740
S0A	9	20	2	970	1940
S0A	10	16	2	685	1370
S0A	11	12.5	2	1140	2280
S0A	12	12.5	1	505	505
S0A	13	6.3	8	915	7320
S0A	14	6.3	8	1110	8880
S0B	15	5	93	172	15996
VB (X80)					
S0A	1	6.3	160	120	19200
S0A	2	8	160	130	20800
S0B	3	5	520	92	29440
VC (X48)					
S0A	1	6.3	96	125	12000
S0A	2	8	96	135	12960
S0B	3	5	192	92	17664
VD					
S0A	1	6.3	2	435	870
S0A	2	10	3	235	705
S0A	3	10	3	235	705
S0A	4	10	2	789	1578
S0A	5	10	2	785	1570
S0A	6	6.3	12	770	9240
S0B	7	5	31	242	7502
VE (X22)					
S0A	1	10	66	255	16830
S0A	2	6.3	44	605	26620
S0A	3	10	44	800	35200
S0A	4	10	44	794	34936
S0A	5	6.3	264	770	203280
S0A	6	8	44	161	7084
S0B	7	5	704	242	170368
VF (X2)					
S0A	1	6.3	4	445	1780
S0A	2	10	6	255	1530
S0A	3	10	6	250	1500
S0A	4	10	4	810	3240
S0A	5	10	4	805	3220
S0A	6	6.3	24	795	19080
S0B	7	5	64	242	15488

RESUMO AÇO CA 50-60			
AÇO	BIT (mm)	COMPR (m)	PESO (kg)
60B	5	2565	410
S0A	6.3	3089	772
S0A	8	434	174
S0A	10	1020	642
S0A	12.5	28	28
S0A	16	14	22
S0A	20	36	90
Peso Total 60B =			410 kg
Peso Total S0A =			1729 kg

CONCRETO : C >=25MPa Fator a/c <=0,55 Ecs=23.800 MPa

2 6 2 7 1 9

END. AVENIDA JURACY MAGALHÃES Jr. Nº 900
W.A. EMPRESARIAL SALAS 404/405 - RIO VERMELHO
CEP: 41194-060 - SALVADOR-BAHIA
(71) 3176-0101 / 99168-2095 e-mail: fpeixoto@fpeixoto.com.br

FRANCISCO PEIXOTO
CREA: 4.688-D 3a. REGIÃO
ENGENHEIROS ASSOCIADOS S/C

JUAREZ PIRES Ma. BETANIA MELLO MONICA SAMPAIO EDMILSON ALVES
Crea: 3.015D Crea: 19.193D Crea: 21.229D Crea: 90.432D

PMG
projetos e engenharia

HOSPITAL GERAL DE LUIS EDUARDO MAGALHÃES LOCAL: AVENIDA BRASILEIRA, LOTEAMENTO MMSO DO OESTE 1, LUIS EDUARDO MAGALHÃES - BAHIA

PROJETO MUNICIPAL DE LUIS EDUARDO MAGALHÃES

PROJETO ESTRUTURAL UNIDADE DE SAÚDE PROJETO EXECUTIVO

PÁTIO - Vigas da cobertura

PMG - PROJETOS E ENGENHARIA

PAT05

ESCALA: 1:50 PROJETO: FRANCISCO PEIXOTO CREA: 4.688-D-BA DATA: 02/12/19